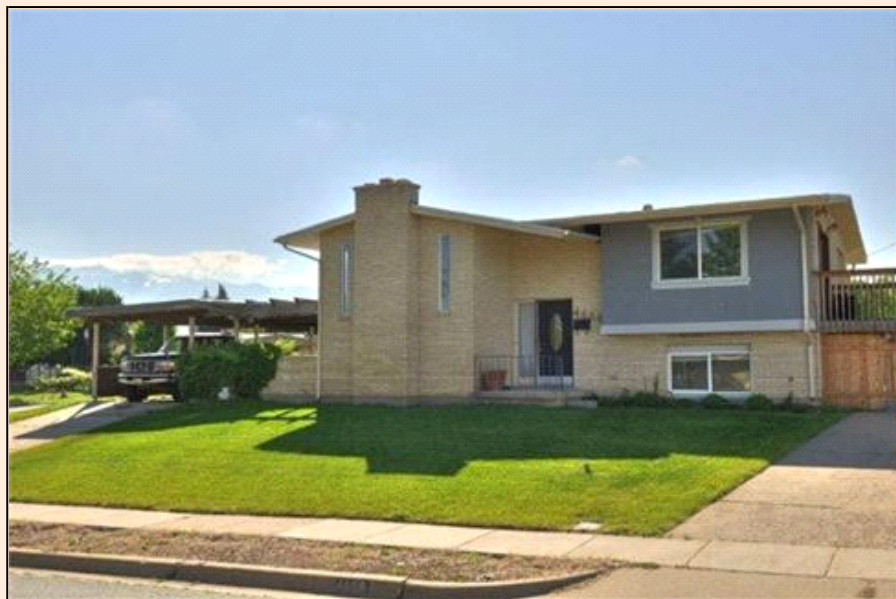


# 4658 S 2400 W Roy

Welcome!

## PROPERTY DETAILS



**Listing Price:** **\$139,000**

**Listing Address:** 4658 S 2400 W

Roy UT 84067

**Bedrooms:** 4

**Full Baths:** 2

**Partial Baths:** 1

**SQ FT:** 2043

**Lot Size:** .23

**Style:** Bi level

**Heat Source:** Gas

**QR Code:**

On a SmartPhone?  
Scan the QR code  
to see this listing



## PROPERTY DESCRIPTION

Welcome to this warm inviting home! Features include an open floor plan, modern bright kitchen great for entertaining! Spacious master with french doors with deck overlook spectacular mountain views, finished lower level with walk out provides additional living space, great back yard with spectacular deck, pond with waterfall and more!

**Short Sale - Subject to Lender Approval!**

**Buyers must be pre-qualified with lender**

## CONTACT INFORMATION



**Cindy Keil**  
**RE/MAX Metro**  
**cindykeilhomes.com**  
579 Heritage Park BLVD Suite 201  
Layton UT 84041  
Direct: 801-829-7018  
888-600-4546  
cindy@cindykeil.com

Your Source for Salt Lake City & Surrounding Area  
Real Estate  
Cindy Keil  
Realtor®, CDPE, E-Pro, FIS, SFR  
Direct: 801-829-7018 Cell 419-283-4516 Fax 888-600-4546  
Licensed in Ohio and Utah



### Equal Housing Opportunity

Property information deemed reliable but not guaranteed and should be verified.

Copyright © 2003-2012 Real Pro Systems LLC. All rights reserved.